

Mono-Systems, Inc.

AdvanceWay™

SCALE: NONE

PART # AW33IE-* INSIDE ELBOW

(ADD "-A" SUFFIX TO SPECIFY ALMOND) (ADD "-W" SUFFIX TO SPECIFY WHITE)

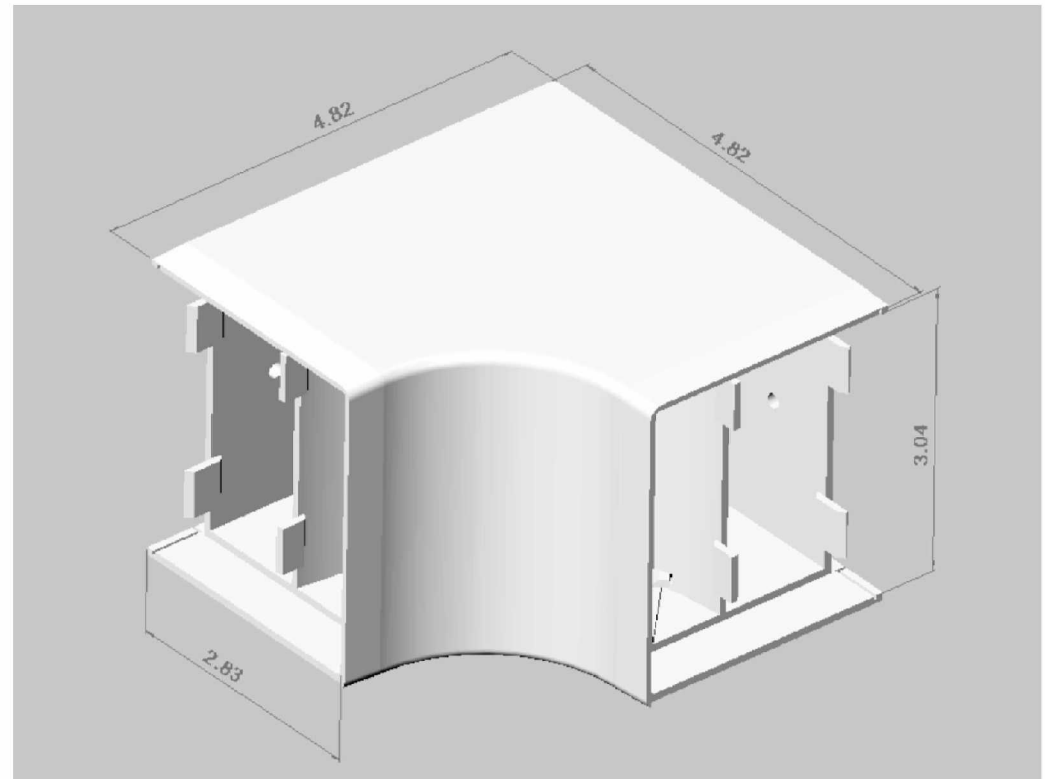
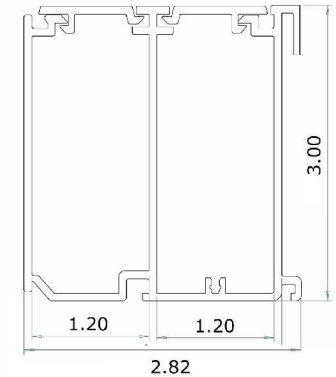
Assembly Instructions

- 1) The AW33IE-* is a 3 compartment fitting (base, divider, and cover)
- 2) Slide the AW33IE-* fitting base onto the end of the AW33IB10-* (base) section.
- 3) Slide the other AW33B10-* base section onto the AW33IE-* fitting base.
- 4) The AW33IE-* fitting base has two 3/16" diameter mounting holes.
- 5) Fasten the AW33IE-* fitting base with hardware appropriate for the wall construction.
- 6) Slide the divider into position on the fitting base.
- 7) Lay the wires and cables into position.
- 8) Snap the AW33IE-* cover onto the fitting base.

Material : ABS 94UL V0



02/09/2009 DOCUMENT REF. NO.: AW33IE-*



MONO-SYSTEMS, INC.
UNIQUE CABLE DISTRIBUTION SOLUTIONS
4 INTERNATIONAL DRIVE
RYE BROOK, NEW YORK 10573
PHONE: (914)-934-2075
FAX: (914)-934-2190